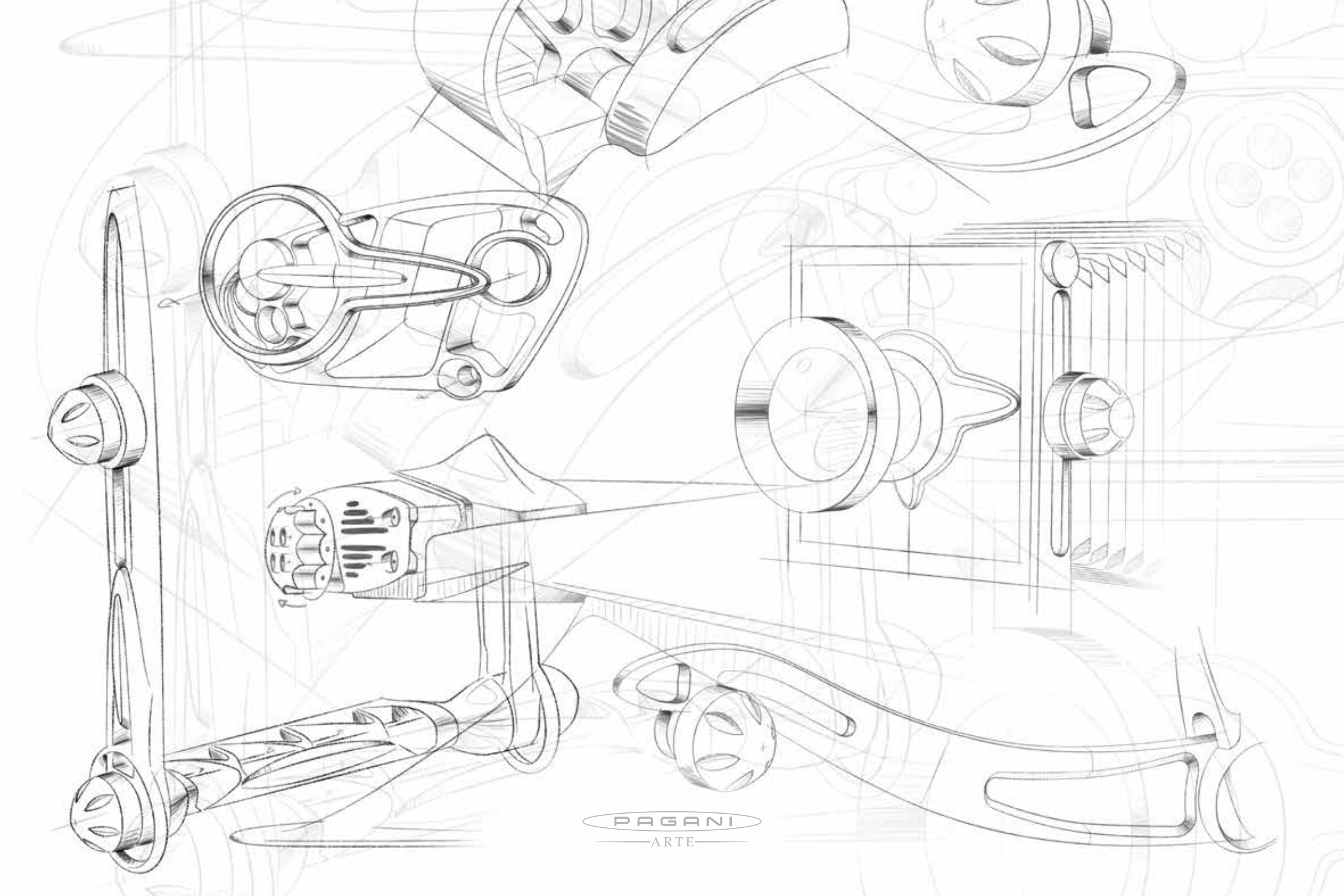




GP810HP
THE TIME OF A PICTURE

PAGANI
ARTE



PAGANI
ARTE

TABLE OF CONTENTS

6	Introduction	22	Large format cameras
8	Why Gibellini	26	Resolution
12	Design according to Horacio Pagani	30	Depth of field
16	Straight from the Motor Valley	32	Movements
17	A unique object in unmistakable Pagani style	39	Technical specifications
21	A black and white emotion	42	Credits



"One day, a friend of mine gave me a Gibellini analog camera. As I looked at it, I thought of the hundreds of cell phone snaps we take unthinkingly without enjoying the pleasure of taking a real photograph. I thought of the magic, the strength and the time it takes to capture an image on a camera like this, after having reflected and meditated long and hard while waiting for the right light. You're not just taking a photo, you're experiencing an emotion.

I decided to become part of all this and, together with my designers, engineers and materials experts, we set to work and designed a photo camera. We wanted a design object crafted so painstakingly as to arouse an emotion in the beholder. We called it "the GP810HP".

Entering into the dynamics of such a complex mechanism was not easy, but with the help of Gibellini this challenge became possible and I hope it will thrill you as much as it thrilled me."

HORACIO PAGANI

WHY GIBELLINI

The constant search for elegance, precision and uniqueness have always been characteristic traits of Gibellini cameras and the brand's founder Alessandro Gibellini, experimenting and innovating with product style through attentive study of detail.

Distinctive elements which are also perfectly reflected in the Pagani philosophy. The two come together in the **GP810HP**, a unique product that represents the emotions and the passion that Pagani and Gibellini share in Italy's Motor Valley.





DESIGN ACCORDING TO HORACIO PAGANI

Start by doing what is necessary, then what is possible; and suddenly you are doing the impossible.

A phrase uttered by St. Francis of Assisi almost one thousand years ago, but also so true and so close to the vision of Horacio Pagani and his idea of creativity.

While supercars are the most obvious manifestation of this creativity, the quest for a constant synthesis between form and function, art and science, stimulated the minds of Horacio and his team to embark on new paths like that of creating the **GP810HP**, the analog camera with the unmistakable Pagani style and superb craftsmanship.





STRAIGHT FROM THE MOTOR VALLEY

The GP810HP took shape after two years of analysis, study and research during which Gibellini technical know-how perfectly matched with exclusive Pagani materials and design features. A harmonious blend that created a unique, exclusive object produced in a limited number of examples.

Made entirely from solid aluminum and titanium with components machined from a single block, the **GP810HP** is a generously sized camera with analog support where the sensor onto which the photographic image is impressed, is a large photosensitive plate measuring 20x25 cm. A negative of this size ensures unrivalled three-dimensionality and spatiality of the image obtained and allows enlargements and sizeable prints to be made without the quality of either details or definition being impaired.

It is a view camera where the optical plane and focal plane can be adjusted by up to 8 degrees enabling the image to be controlled, the converging lines to be corrected in architectural photography and the picture to be blurred in the case of portraits or still life.

A UNIQUE OBJECT IN UNMISTAKABLE PAGANI STYLE

This project is dedicated to extremely demanding clients who love beauty for its own sake regardless of whether they are photography enthusiasts or not. Behind this camera there is great craftsmanship, there is technology and passion. It is an object created for a precise purpose; to evoke an emotion.

With these words, Horacio Pagani enshrines the essence of the **GP810HP** camera, a further expression of his creativity, a new stage in his approach to design, in the exaltation of beauty in all its manifestations.

The Pagani DNA is immediately perceptible. The rotating head is entirely made of aluminum machined from a solid block, while the professional tripod is in leather-covered carbon fiber. The pedestal on which the camera is mounted is also made of carbon fiber, aluminum and Alcantara.

The optical train, the heart of the photo camera, was specifically developed by a specialized company. Not to mention the case, made from the same types of leather used to upholster the seats and interior of Pagani hypercars. The most demanding clients will be able to configure their cameras to exactly match their own cars. Thereby, underscoring a concept and an exclusive design.

Just like every Pagani creation, the **GP810HP** camera can only be purchased through the official Pagani Automobili channels or ordered from Pagani dealers worldwide.





A BLACK AND WHITE EMOTION

It's all due to the special "Platinum Palladium" printmaking technique: platinum and palladium salts react to the photosensitivity of UV light to create an extremely durable image of the maximum artistic and aesthetic quality. One of the particular features of the process is the way in which the photosensitive emulsion of platinum and palladium salts is applied to the paper by brush. This creates a characteristic, uneven black border around the image which resembles brush strokes, making each of your prints unique and inimitable.

A true work of art whose ageing will only be witnessed by time.

LARGE FORMAT CAMERAS

The art of photography began with large format cameras, which were subsequently downsized for the sake of convenience, to make them more portable, in versions with film and, more recently, the digital cameras we all know.

A large format camera uses analogue film measuring 4x5" (10x12cm) to 20x24" (50x60cm). This size offers a number of benefits in terms of the resolution and three-dimensionality of the resulting image, as well as its spatial qualities.

The predominant large format is 8x10" (20x25cm), a size which produces excellent results while maintaining the right compromise when it comes to portability and set-up.

The key features of a large format camera are high resolution, three-dimensionality and the possibility of moving the front part of the camera (lens plane) and the rear part (film plane) to correct perspective, adjusting focal planes and creating refined effects in the image such as blur, correction of convergence, and image composition.





RESOLUTION

An 8x10" (200x250mm) film can contain much more information than a professional reflex camera (20x24mm). This makes it possible to obtain a highly detailed negative that can be used to produce blow-ups and extra-large prints without sacrificing quality and resolution.

The analogue medium, the gelatin silver film on which the photographic image is impressed, which must be loaded in a film holder in the darkroom prior to use, gives the image a three-dimensional quality and a range of hues that is clearly superior to that of a modern digital sensor, qualities for which it is widely appreciated by professional photographers.

1. GP810HP, Ilford HP5, 8x10"

2. Crop detail zoom 50%

3. Crop detail zoom 100%





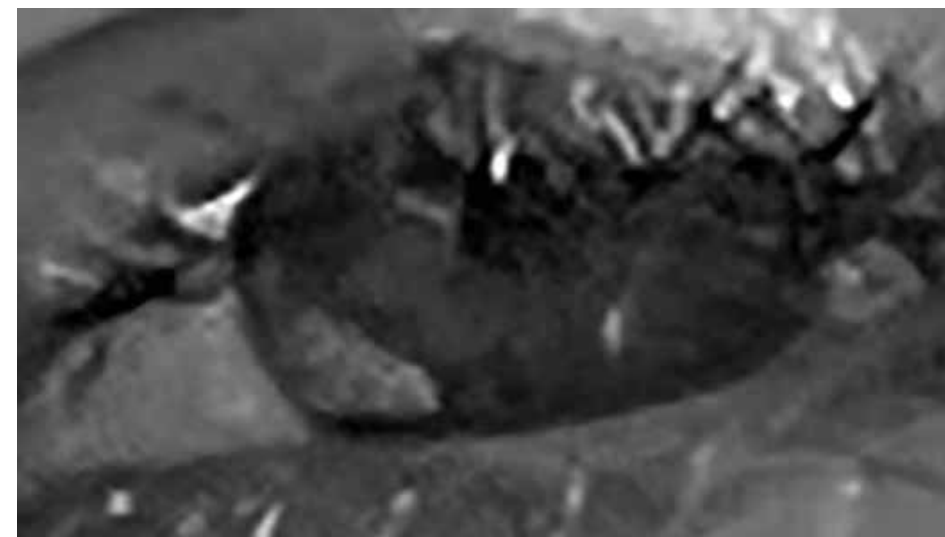
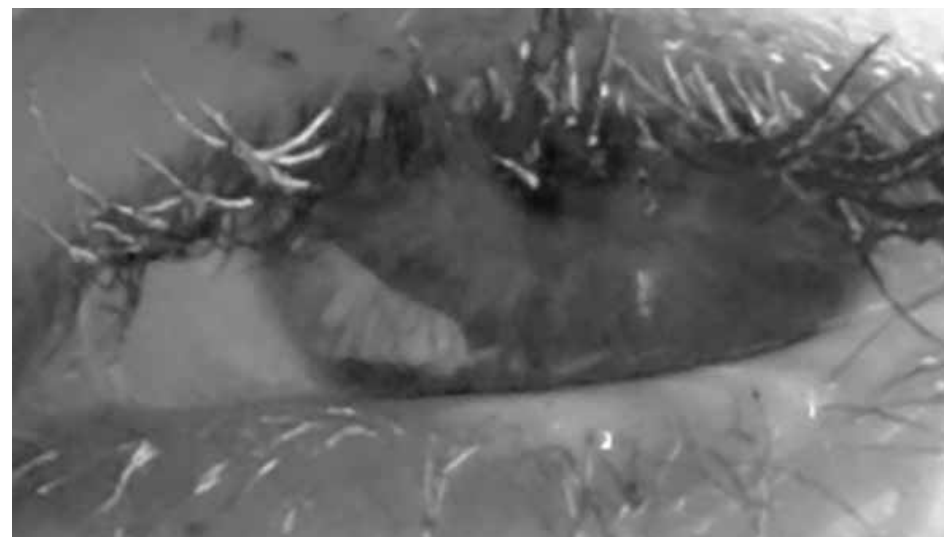
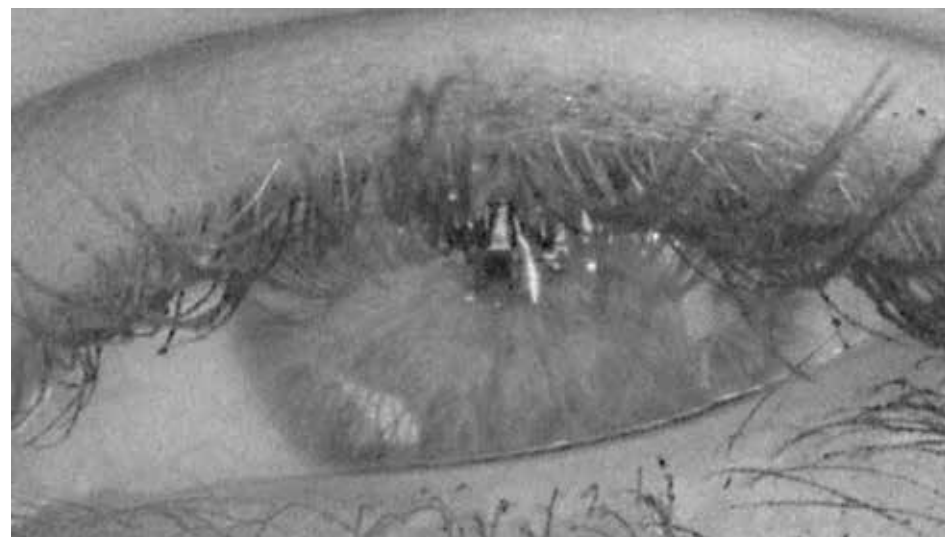
①



②



③



1. GP810HP
2. Medium format digital camera
3. Smartphone

DEPTH OF FIELD

The separation of planes obtained with a large format camera is unrivalled. The spatial and three-dimensional qualities give the resulting image an appearance of reality that allows the viewer to focus on every single detail, every little subtlety of the subject photographed, producing a more harmonious result.



- 1. GP810HP
- 2. Medium format digital camera
- 3. Smartphone



MOVEMENTS

A key advantage of the view camera is the fact that the lens plane and the focal plane can move completely independently of one another. This means the lens and the film can move and rotate in completely different directions, creating effects and results in the image that can only be obtained with this type of camera.

The **GP810HP** has 8 degrees of freedom: 4 movements on the lens plane and 4 on the film plane.

Each of these movements generates a particular effect or result in the image. For example, convergence of buildings can be corrected in architectural photography, elements that are far apart can be put on the same focal plane, or faces can be blurred in portraits.

Front Movements

1. Vertical decentralisation (RISE/FALL): +35mm / - 50mm
2. Lateral decentralisation (FRONT SHIFT): +/- 35mm
3. Horizontal oscillation (TILT): +/- 45°
4. Vertical oscillation (SWING): +/- 45°

Rear Movements

5. Horizontal decentralisation (REAR SHIFT): +/- 50mm
6. Horizontal oscillation (TILT): 0 - 90°
7. Vertical oscillation (SWING): +/- 45°
8. Axial decentralisation (wide angle position): 0-180mm

UNFOLD THE CAMERA



RISE/FALL



Zero position



+35mm



-50mm

FRONT TILT



Zero position



+45mm



-45mm

FRONT SHIFT



Zero position



+35mm



-35mm

FRONT SWING



Zero position



+45mm



-45mm

REAR SHIFT



Zero position



+50mm



-50mm

REAR TILT



Zero position



-90°

REAR SWING



Zero position



+45°



-45°

WIDE ANGLE POSITION



Zero position



+180mm

VERTICAL AND
HORIZONTAL POSITION



Vertical



Horizontal

HOW TO FOCUS

Turn the focusing knobs right and left so you can see the sharpness and correct focus of your image on the groundglass.



GP810HP
TECHNICAL
SPECIFICATIONS

Bellows	min 75mm (with bag bellows) – max 620mm
Dimensions (Folded)	360X350X130mm
Weight	4.7kg
Materials	Titanium Gr.5, Aluminium
Movements	separate with different locks and knob, run on ball bearings
Front Rise/Fall	+ 45 / – 55 mm
Front Shift	+/- 35mm
Front Swing	+/- 20°
Front (Central) Tilt:	+/- 45°
Rear Shift	+/- 100mm
Rear Swing	+/- 20°
Fine Focusing	rear central knobs
Lensboard Size	139x139mm
Fast Focusing	using the rear standard of the camera, run on bearings with friction, maintaining parallels the front standard with the rear.
Groundglass	bright glass
Back	compatible with all commercial film holders, included the new aluminium Gibellini FH810



Photos made on 8x10" film by Alessandro Gibellini

- 6

Horacio Pagani, portrait on 8x10" film, Platinum Palladium print scan
- 18

8x10" film, Huayra R on the Pit Lane of Vallelunga race track during the Pagani Raduno "Vanishing Point" 2021, Rome
- 20

8x10" film, Horacio Pagani on the Pit Lane of Vallelunga race track during the Pagani Raduno "Vanishing Point" 2021, Rome
- 24

8x10" film, Pagani Huayra Tricolore near the Freccie Tricolori during the 60th Anniversary of Freccie Tricolori, air show in Rivolto (UD), 2021
- 26

8x10" film, Cathedral of Modena, 2021
- 30

8x10" film portrait

